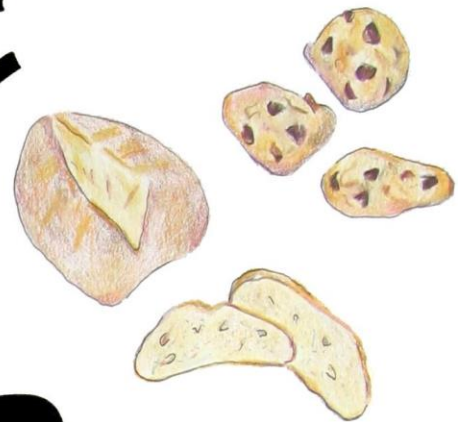
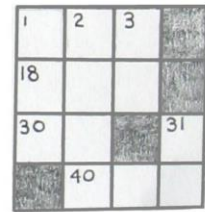




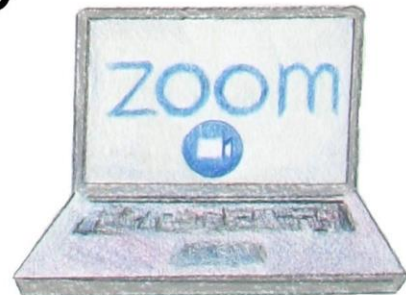
COTTAGE



FEVER:



A Virtually
Real
Holiday
Show



Washington Grove Holiday Gala

December 12, 2020

*Produced in collaboration with
Montgomery Municipal Cable*

Cottage Fever: A Virtually Real Holiday Show

CAST

Woof Blitzen (news anchor): Christine Dibble

Bob Goodword (government reporter): Jeff McCrehan

Murphy Beige (entertainment reporter): Jane Mellman

Lois Lanechange (local living reporter): Sharon Sisson

Lou Grunt (business reporter): Ernie Kawasaki

Henrietta Higgins (drama coach): Renee Moloznik

Calvina Klein (fashion reporter): Missy Yachup

Recreation Committee: Missy Yachup (chair), Mary Blake, Genevieve Hix, Arlene McCrehan (with special appearance by Judy Mrocza and special assistance from Cory Hix)

The Puzzle People: Charlie Challstrom, Mary Challstrom, Nevin Freeman, Cathleen Kilgallen (video by Nevin Freeman)

Travel Agency: Liz Robertson (Agent), Gail Littlefield, Bella Gilmore, Sophie Gilmore, Cory Hix and Genevieve Hix (travelers)

The Mindells: Jeff McCrehan and Arlene McCrehan (video by Johanna McCrehan)

“Why, Oh, Why, Generation Y?”: Shelley Winkler and Sarah Stopak (video by Johanna McCrehan)

Joe: Rob Gilmore

Moe: Collin Turner

Chainsaw Puppeteer: Ed Mrocza (video by Marida Hines)

Joe’s kids: Bella Gilmore, Eli Gilmore, Jude Gilmore, Sophie Gilmore

Bartender: Ernie Kawasaki

Mask models: Judy Banachowski, Mary Blake, Sophie Gilmore, Genevieve Hix, Allan Janus, Ernie Kawasaki, Gail Littlefield, Arlene McCrehan, Teddy McCrehan, Renee Moloznik, Bill Robertson, Liz Robertson, Sharon Sisson, Hazel Turner, Henna Turner, Yachup Family



CAST (continued)

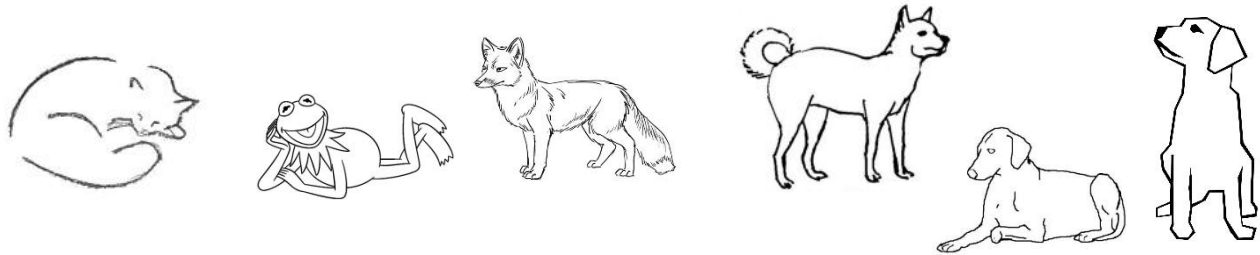
Commercial: A. Kit Brown, R. Harry Young, Ryan Young (video by Emily Brown, editing by A. Kit Brown)

Marginal Thespian Players: Betsy Klinger (Acorn Library); Peggy Booher, Hazel Turner and Henna Turner (Halloweeners)

Photography and video subjects: Bob Booher, Tom Clifford, Paige Clifford, Cam Clifford, Eva Clifford, Marida Hines, Bella Gilmore, Eli Gilmore, Jude Gilmore, Sophie Gilmore, Arlene McCrehan, Jeff McCrehan, Christine Dibble, Tom Land

Special appearances: Phoebe, Violet, Ava, and Tom Land

Guest appearances: Celeste the Cat, Chloe the Dog, Cane the Dog, Nessie the Dog, Foxy the Fox, and Kermit the Frog



MUSICAL PERFORMERS

Charlie and Mary Challstrom: “The Christmas Waltz” (Johnnyswim, written by Jule Styne and Sammy Cahn) (video by Montgomery Municipal Cable)

Eddy Viscosity and the Turbulent Core: “Jingle Bell Rock,” “Grandma Got Run Over by a Reindeer,” “Winter Wonderland,” and “Blue Christmas” (video by Montgomery Municipal Cable)

Cheryl Gendron (lead vocals, ukulele); John Wright (lead vocals, guitar); Fred Proctor (lead vocals, guitar); Bobby Berg (banjo, backup vocals); Keith Gillis (guitar, backup vocals); Will Percy (keyboard); Joe Hodges (bass); Jodie Pope (guitar); Chris Rounds (percussion)

“Jingle Bell Rock,” written by Bobby Helms and Hank Garland, or Joseph Beal and Jim Boothe (the dispute about this remains to the present day); Elmo and Patsy’s “Grandma Got Run Over by a Reindeer,” written by Randy Brooks; “Winter Wonderland,” written by Richard B. Smith and Felix Bernard; Elvis Presley and Martina McBride’s “Blue Christmas,” written by Billy Hayes and Jay Johnson.

MUSICAL PERFORMERS (continued)

The Strother Family (Sita, Emma, and Terry Strother): “Songbird” (Fleetwood Mac)
(video by Sita Strother)

**Washington Grove Dancers’ Retrospective: Frank Sinatra’s and Ella Fitzgerald’s
“Have Yourself a Merry Little Christmas”** (song written by Ralph Blane and Hugh
Martin) (retrospective designed by choreographer Samantha Beres and assembled by
Montgomery Municipal Cable)

**Isabella Aguilera, Victoria Bittner, Jelena Bright, Mariana Bright, A. Kit
Brown, Samantha Brown, Elise Cavicchi, Julia Cavicchi, Violet Cavicchi, Eva
Clifford, Abigail Fones, Jackson Fones, Bella Gilmore, Eli Gilmore, Jude
Gilmore, Sophie Gilmore, Elizabeth Haupt, Corey Hix, Genevieve Hix, Hannah
Lucas-Dreiss, Elvira Martinez, Nikki Martinez, Abby Reed, Jordan Reed, Gillian
Roark, Sarah Stopak, Emma Strother, Luna Strother, Sita Strother, Paige
Turner, R. Harry Young**

The Gilmore Girls (Bella and Sophie): “White Winter Hymnal” (Fleet Foxes, written
by Robin Pecknold) (video by Emily Cavey)

LERD: “Christmas in L.A.” and “This Christmas” (“Christmas in L.A.,” popularized by
Vulfpeck, written by Jack Stratton; “This Christmas,” written by Donny Hathaway and Nadine
McKinnor) (video by Bill Saar)

**Cameron Dulany (vocals), Logan Saar (drums), William Saar (guitar), Gray
Yachup (bass)**

Adalia Tara: “Human” (by Adalia Tara) (video by Jacob Wise)

Adalia Tara (keyboards and vocals)

Owen Crise: “Puung Christmas” (by Monoman) (video by Owen Crise)

Owen Crise (piano, saxophone, guitar)



MUSICAL PERFORMERS (continued)

Grand Finale: “The Grove Sleeps Tonight” (lyrics by Judy Mroczka, in homage to songwriter Solomon Linda, and later performers of “The Lion Sleeps Tonight,” including Pete Seeger and The Tokens) (video by Montgomery Municipal Cable)

Lead vocals by Gwen and Jerry Calderone, with Jerry Calderone on keyboard; chorus by the ensemble, led by Arlene McCrehan

Notice: No grandmas were injured in the making of this show. (And the animals are all OK too.)



THE GROVE SLEEPS TONIGHT

VERSE 1:

In the Grove, the quiet Grove,
The children sleep tonight.
In the Grove, the peaceful Grove
The bell stays still tonight.

CHORUS: Owimoweh, owimoweh, owimoweh, owimoweh

VERSE 2:

In the forest, the West Woods forest,
The owl hunts tonight.
In the forest, the quiet forest,
The deer bed down tonight.



CHORUS: Owimoweh, owimoweh, owimoweh, owimoweh

VERSE 3:

In the forest, the lovely forest
Invasives flex their might
In the forest, the mighty forest
The warriors wage their fight



CHORUS: A weed-a-whack, a weed-a-whack, a-weed-a-whack, a-weed-a-whack

VERSE 4:

In the heavens, the wondrous heavens,
Rudolph shows the light.
In the heavens, the starry heavens,
Old Santa takes his flight.



CHORUS: Owimoweh, owimoweh, owimoweh, owimoweh

VERSE 5:

In the Grove, the snowy Grove
The Town Hall shows its light.
In the Grove, the hopeful Grove,
Old Santa finds his site.



CHORUS: Owimoweh, owimoweh, owimoweh, owimoweh

THE PRODUCTION TEAM

Producer/Director: Judy Mroczka

Assistant To The Producer/Director: Marilyn Frey

Creative Team: Mary Blake, Christine Dibble, Marilyn Frey, Arlene McCrehan, Jeff McCrehan, Ed Mroczka, Judy Mroczka

Script (Show): Judy Mroczka

Script ("Why, Oh, Why, Generation Y?"): Christine Dibble (writer and director)

Script ("My Sourdough Starter"): Judy Mroczka, Arlene McCrehan, Jeff McCrehan

Art Work: Leigh Partington

Program Design: Leigh Partington and Keith Gillis

Props: Marilyn Frey, Ed Mroczka

Videography: Montgomery Municipal Cable (Melissa Aymold, Albert Myers, Raychyl Segovia)

Video Editing: Albert Myers of Montgomery Municipal Cable

Additional Videography: Emily Cavey, Marida Hines, and Johanna McCrehan

Grove Winter Photos: Emily Cavey

Introductions To Musical Acts: Teddy McCrehan (Sign-Meister), Jeff McCrehan (narrator), Arlene and Johanna McCrehan (signs), Johanna McCrehan (videographer)

Sound Effects: Andrew Hotaling

Paperwork-Meister: Mary Blake

Photo Research: Christine Dibble

Archival Dance Footage: John Porter, Dick Cavicchi, Georgette Cole

Musketmen Photographs: Allan Janus

Lighting (Town Hall): Charlie Challstrom and Paul Patrone



**We wish to thank the Recreation Committee and the
Woman's Club of Washington Grove
for their generous support**

DEDICATION

**To health care workers, scientists, and COVID-19
victims in the Grove and around the world.**

