

**DISCLAIMER:**

THIS PLAN IS FOR GENERAL PRESENTATION PURPOSES ONLY, AND IS NOT INTENDED, NOR SHOULD BE USED, AS A SURVEY. THE BOUNDARY LINES SHOWN WERE OBTAINED USING THE MERLIN-MARYLAND ONLINE DATABASE. ACCURACY OF INFORMATION CANNOT BE GUARANTEED.

**PLAN VIEW**

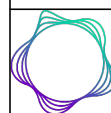


**LEGEND**

- EXISTING TREES TO REMAIN
- EXISTING SHRUBS TO REMAIN
- CONDUIT
- GRASS
- EXISTING UNPAVED PARKING

# EXHIBIT 1A

300 GROVE AVENUE, WASHINGTON GROVE, MD 20880  
PEPCO PUBLIC CHARGING EQUIPMENT PLAN  
FOUR NOVACHARGE LEVEL 2 EVSE

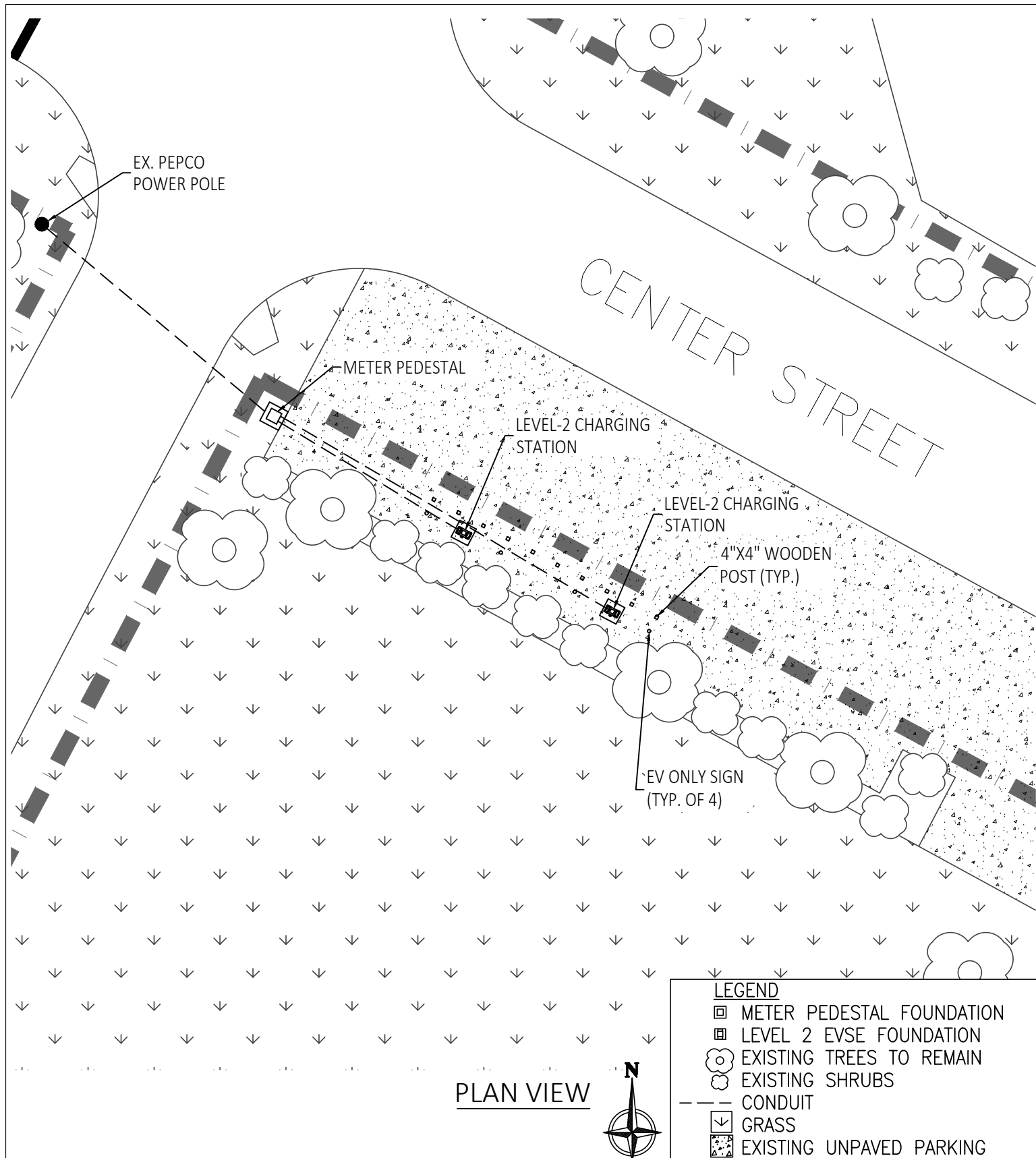


**pepco**<sup>SM</sup>

AN EXELON COMPANY

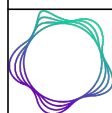
SCALE : NONE

WASHINGTON GROVE  
- McCATHRAN HALL



# EXHIBIT 1B

300 GROVE AVENUE, WASHINGTON GROVE, MD 20880  
PEPCO PUBLIC CHARGING EQUIPMENT PLAN  
FOUR NOVACHARGE LEVEL 2 EVSE

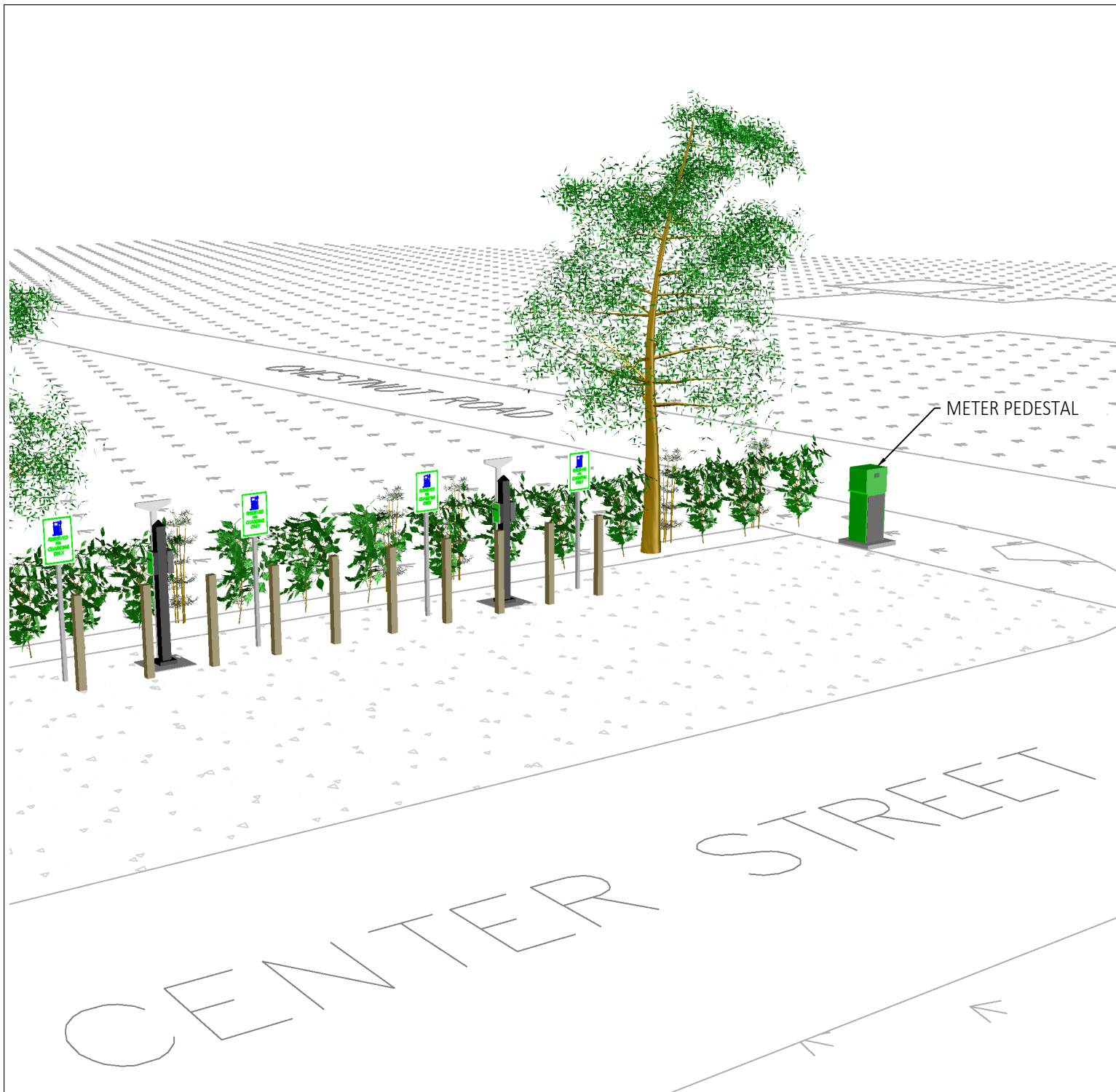


**pepco**<sup>SM</sup>

AN EXELON COMPANY

SCALE : NONE

WASHINGTON GROVE  
- MCCATHRAN HALL



LINEAR PERSPECTIVE VIEW

## LEGEND



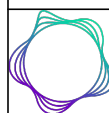
GRASS



UNPAVED  
PARKING

# EXHIBIT 2

300 GROVE AVENUE, WASHINGTON GROVE, MD 20880  
PEPCO PUBLIC CHARGING EQUIPMENT PLAN  
FOUR NOVACHARGE LEVEL 2 EVSE



**pepco**<sup>SM</sup>

AN EXELON COMPANY

SCALE : NONE

WASHINGTON GROVE  
- MCCATHRAN HALL